

ALLUMINIO “TAGLIO TERMICO”

Sistema Alzante S140



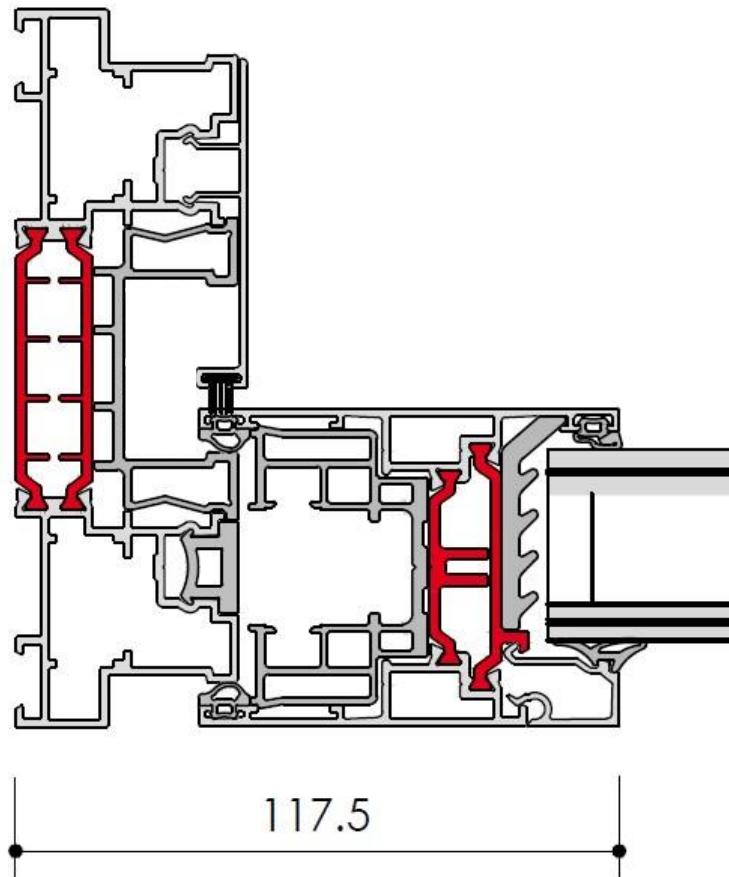
Caratteristiche

Telaio 2 e 3 binari
Nodo centrale slim 44 mm
Vetri doppi/tripli da 28 mm a 48 mm
Altezza della soglia a pavimento 25 mm
Portata carrelli kg 270 (420 kg con carrelli supplementari)

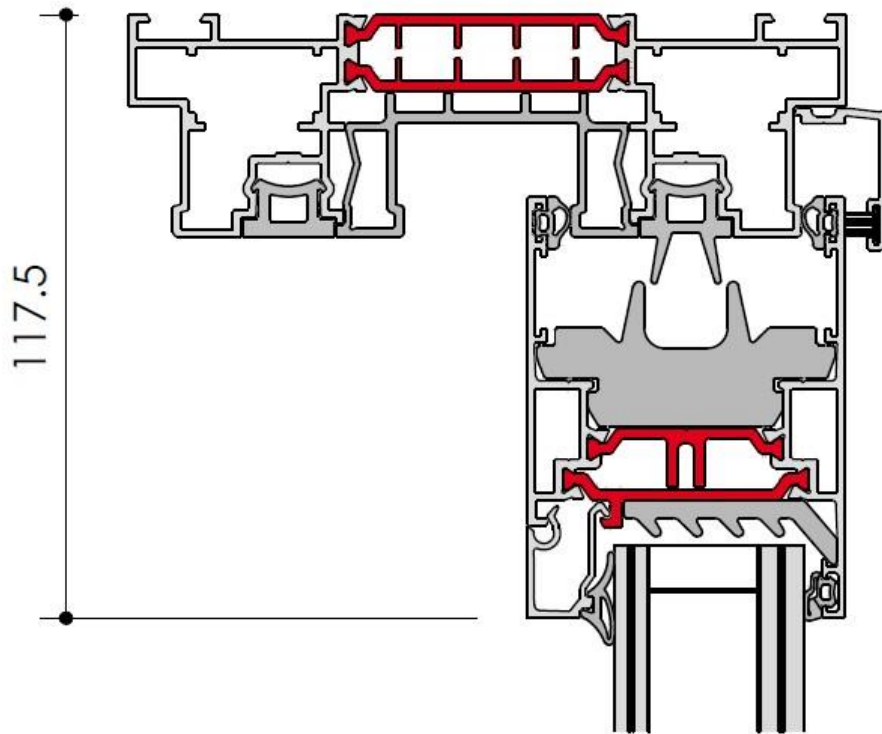
Prestazioni

Tenuta all'acqua (EN 12208):	E900 (900 Pa)
Permealità all'aria (EN 12207):	4 (600 Pa)
Resistenza al vento (EN 12210):	C4 (H/300 a 1600 Pa)
Trasmittanza termica (doppio vetro):	$\leq 1,3 \text{ W/m}^2\text{K}$
Trasmittanza termica (triplo vetro):	$\leq 1,0 \text{ W/m}^2\text{K}$
Potere fonoisolante fino a: $R_w =$	44 Db
Classe anti - effrazione:	RC2

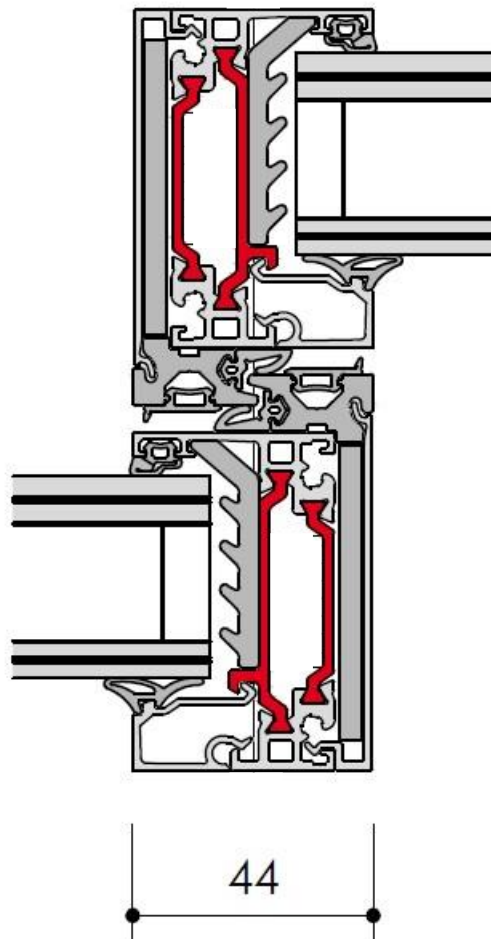
NODO LATERALE



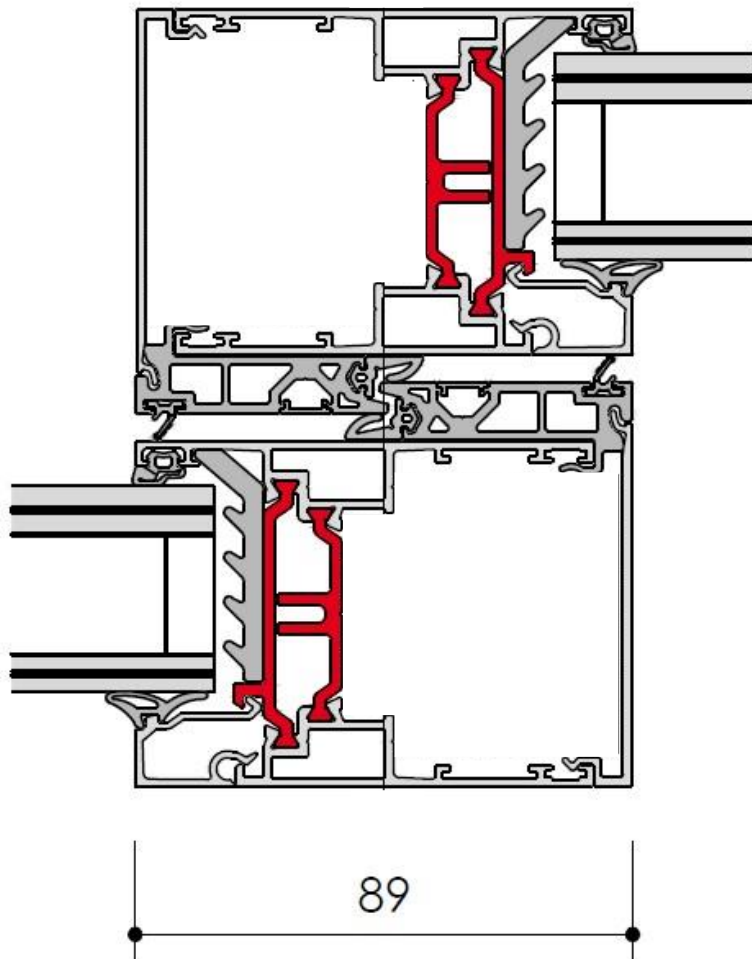
NODO SUPERIORE



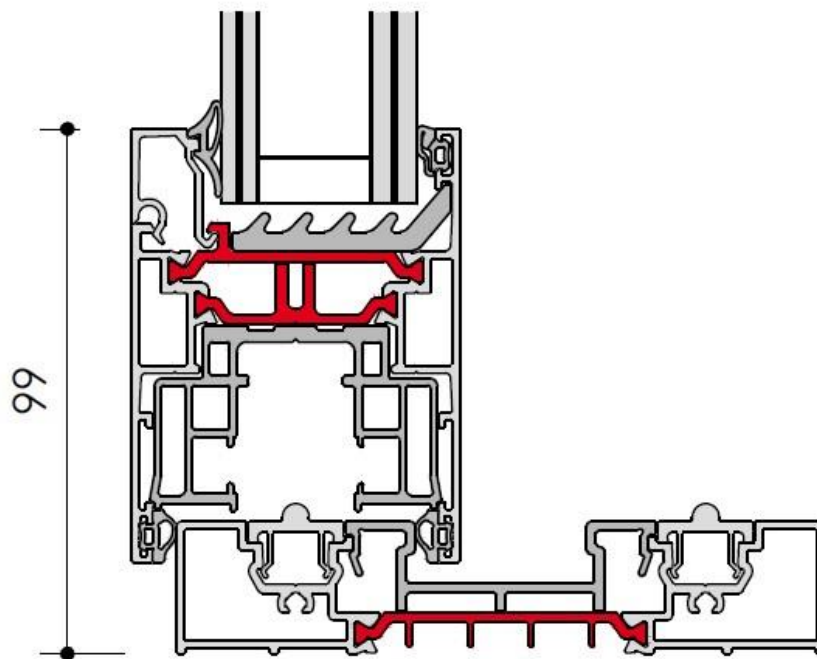
NODO CENTRALE SLIM



NODO CENTRALE STANDARD

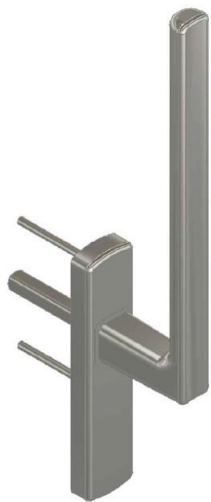


NODO INFERIORE SOGLIA RIBASSATA



MANIGLIE

MOD. QUADRA



MOD. RONDO

