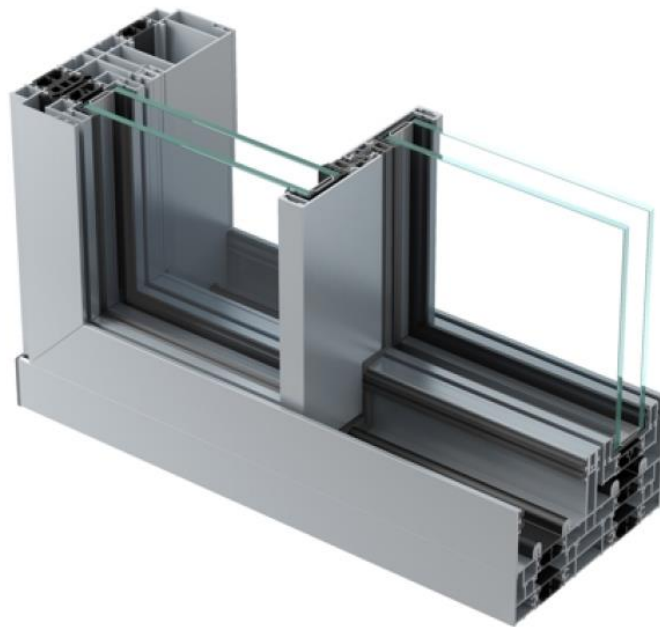


ALLUMINIO “TAGLIO TERMICO”

Sistema Scorrevole Infinium



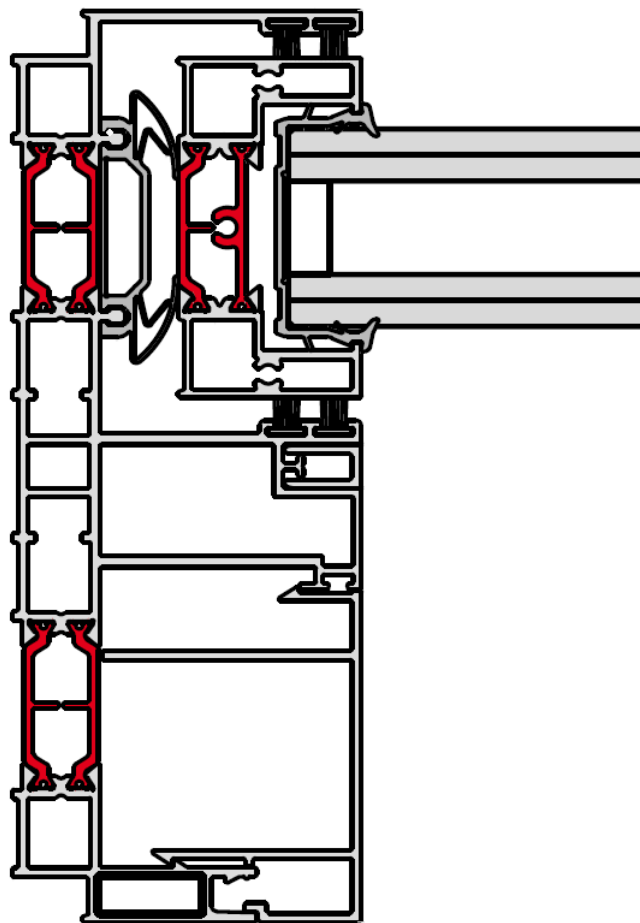
Caratteristiche

Nodo centrale 21 mm
Vetri 38 mm e 52 mm
Portata fino a Kg 400 ad anta
Disponibile a due o tre binari
Telaio completamente nascosto
Soluzione con montante d'angolo apribile
Serratura centrale completamente integrata
Anta larghezza fino 3000 mm e altezza fino 3500 mm
Maniglia di bloccaggio laterale con meccanismo a scomparsa

Prestazioni

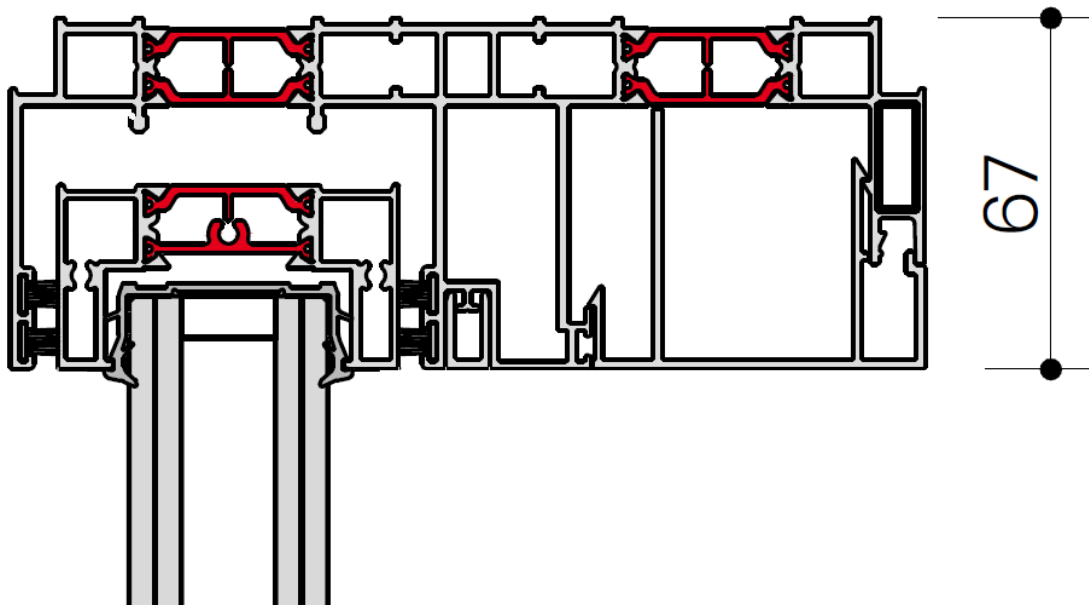
Resistenza al vento (EN 12210):	C3 (1200 Pa up to 160 km/h)
Trasmittanza termica (doppio vetro):	$\leq 1,3 \text{ W/m}^2\text{K}$
Trasmittanza termica (triplo vetro):	$\leq 1,0 \text{ W/m}^2\text{K}$
Classe anti – effrazione fino a:	RC2

NODO LATERALE

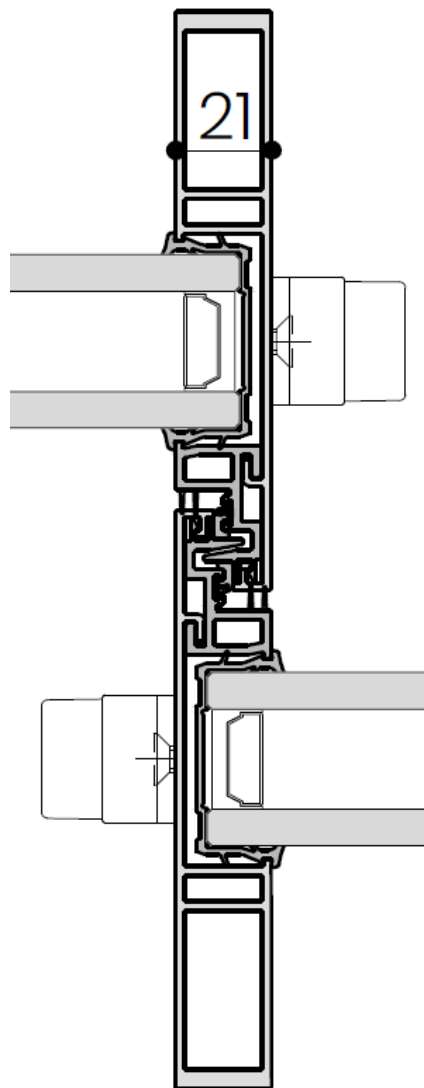


67

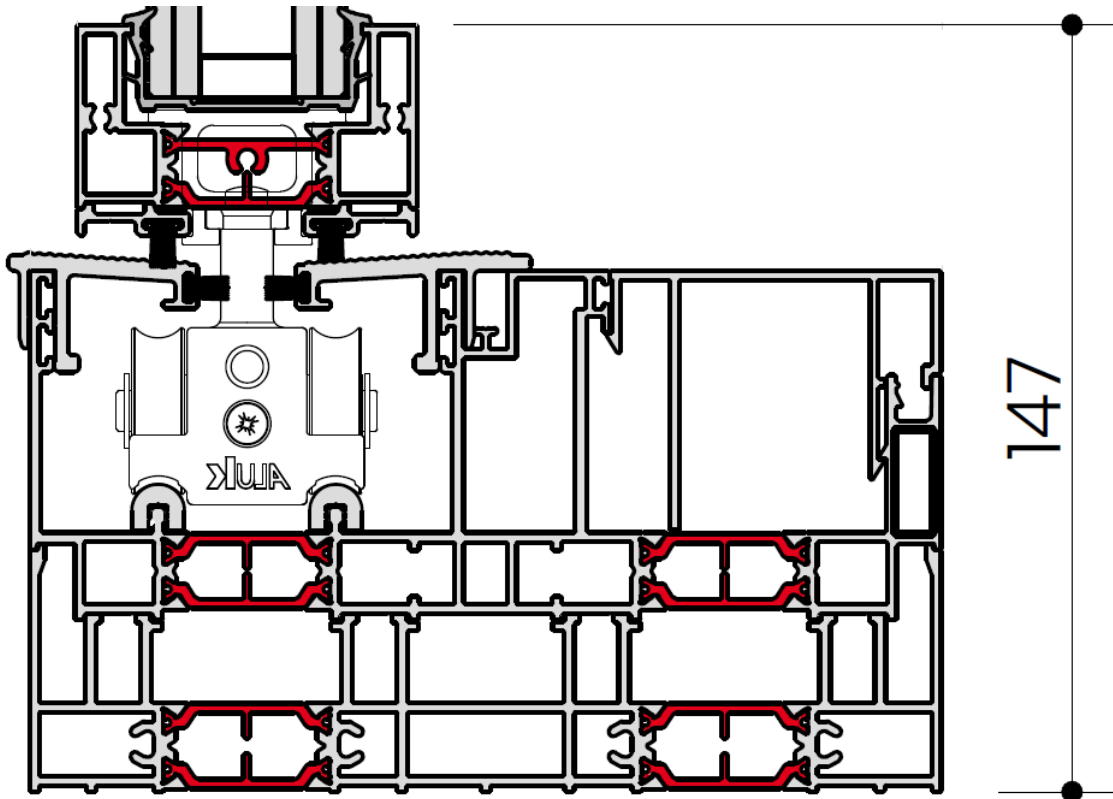
NODO SUPERIORE



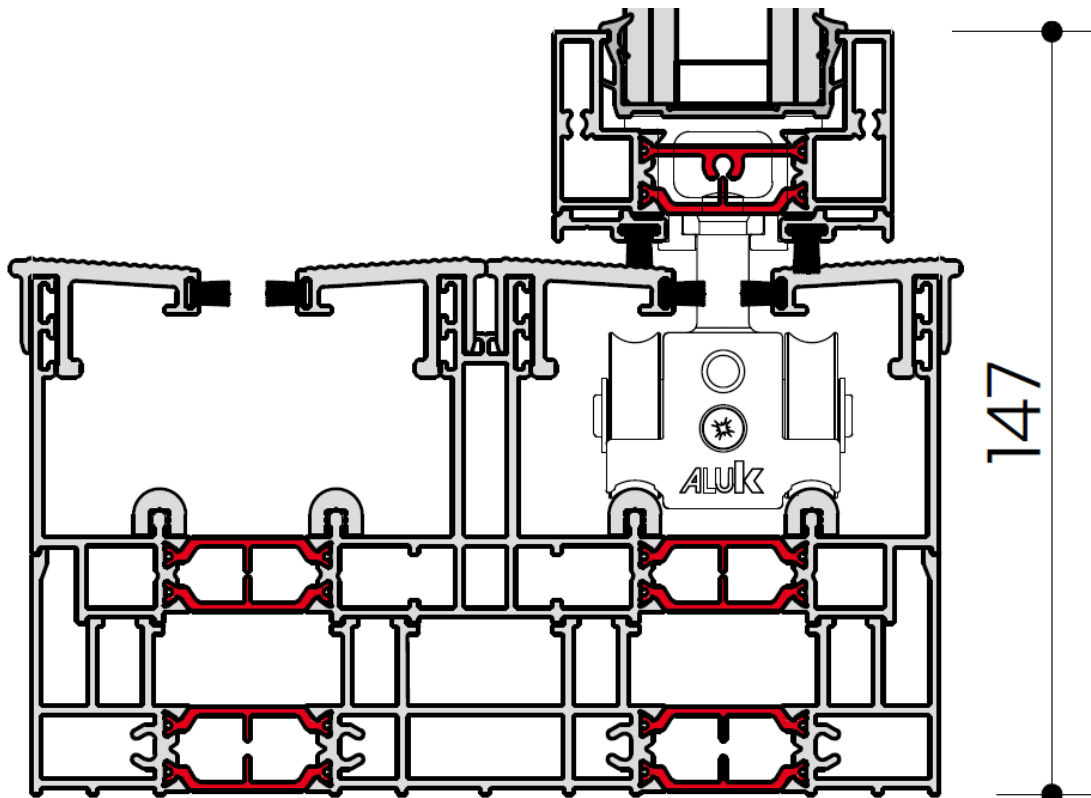
NODO CENTRALE



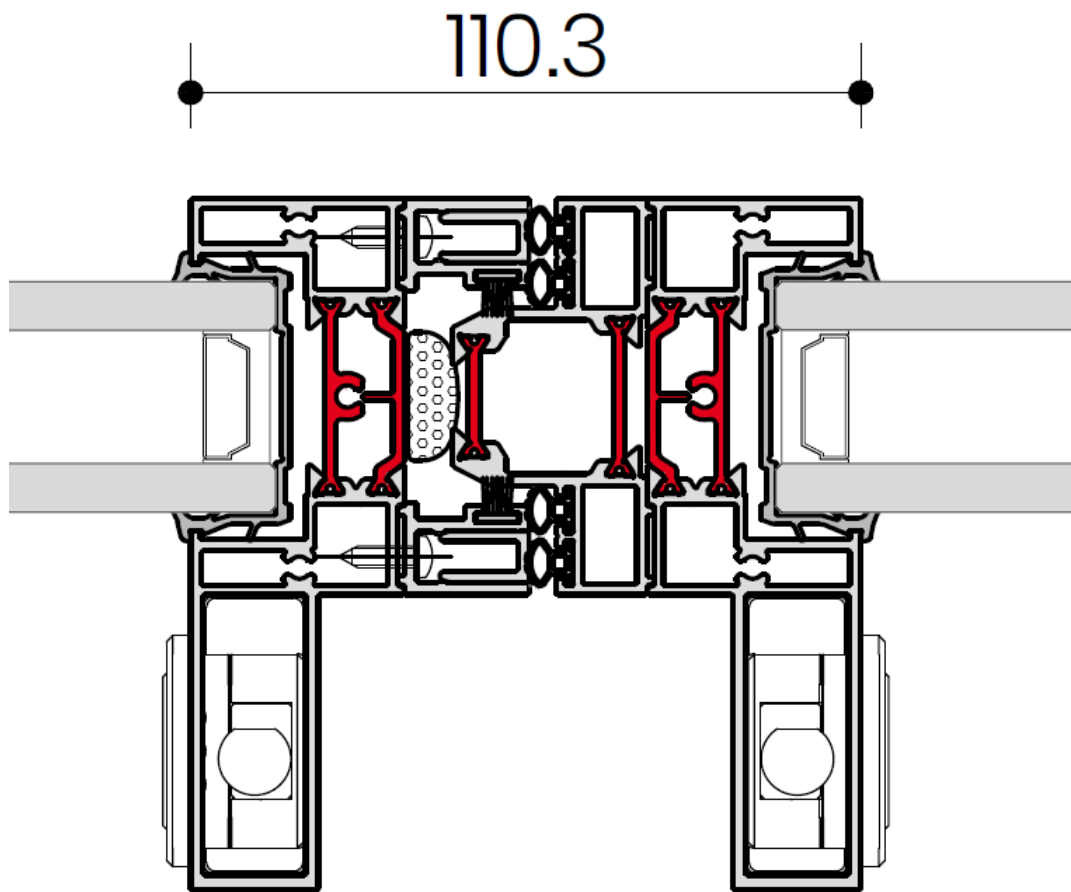
NODO INFERIORE 1 ANTA + FISSO AD INCASSO



NODO INFERIORE 2 ANTE AD INCASSO



NODO CENTRALE 4 ANTE



NODO AD ANGOLO

